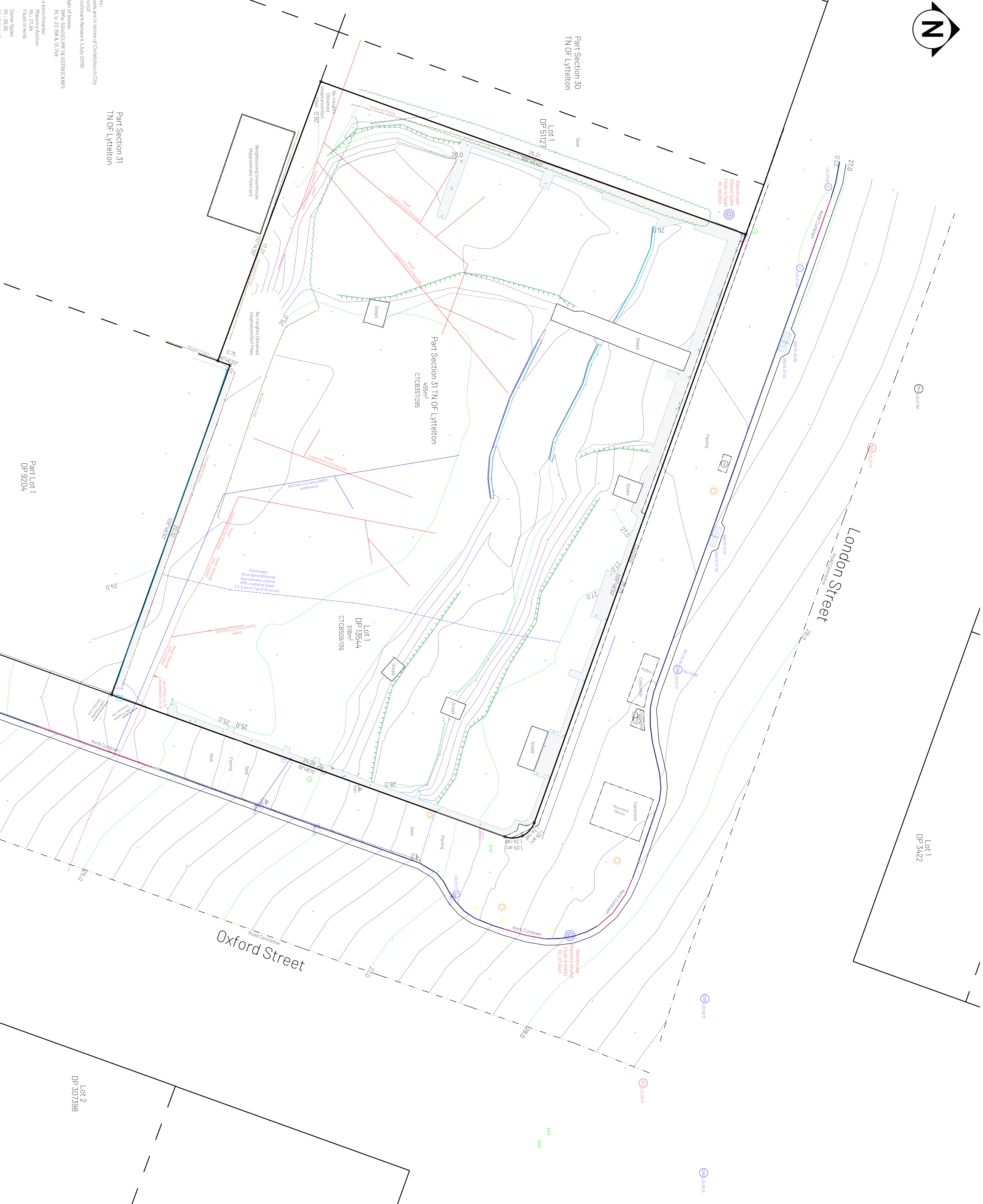


The boundaries, dimensions & areas shown on this plan are subject to survey.
 Building location is indicative only.
 Tied levels have been turned off - see DWG file.
 Survey undertaken 02/12/2020.



Legend	
	Benchmark
	Roadside Sign
	Spot Height
	Utility Pole
	Water Tap
	Sewer Manhole
	Stormwater Outlet
	Stormwater Outlet
	Sump
	Square Sump
	Water Valve
	Water Meter
	Telephone Pillar
	Electricity Boundary Box
	Street Light
	Boundary Corner
	Ballard
	Edge of Seal
	Cutdown Crossing
	Edge of Concrete
	Road Centreline
	Top of Kerp
	Fence
	Building
	Top of Bank
	Bottom of Bank
	Vegetation Line
	Top of Retaining Wall
	Bottom of Retaining Wall
	Sewer Line (GPR Located)
	Stormwater Line (GPR Located)
	Stormwater Line (GPR Located)
	Stormwater Line (GPR Located)
	Stormwater Line (GPR Located)
	Channel
	Contour Floor 0.2m Interval
	Reinforced Concrete Wall

Note:
 Levels are in terms of Christchurch City
 Benchmark Network (July 2019)

Origin of levels:
 BMS: 5046 (UMF) & 03338 (EKMP)
 RLS: Z2188 & 03749

Site benchmarks:
 Masonry Anchor
 RL: 27.94
 Flush in kerb
 RL: 26.95
 Flush in seal

7321 - Site Survey - 3-9 London Street, Lyttelton

T 03 339 0401 | E info@bgnz | www.bgnz

Rev.	Date	Amendment
1	09/02/2020	Issue for tender
2	04/07/2020	Issue for tender

Scale: 1:300 @ A1
 Date: 04/07/2020
 Client: Collets Corner Ltd
 Drawn: HK
 Review: TA

Site Survey
 Lot 1 DP 13544 &
 Part Section 31 TN
 OF Lyttelton

Sheet 1 of 1